

ASYLUM STATISTICS MONTHLY REPORT

JUNE 2016

January 2016: asylum statistics refer to the number of persons instead of asylum cases

Until the end of 2015, the statistics published by the CGRS referred to asylum cases (number of asylum applications or asylum decisions). However, one case can refer to several persons as minors accompanying their parent(s) generally do not file an asylum application of their own.

As from January 2016, the CGRS' statistics refer to the number of persons concerned by an asylum application or asylum decision. As a result, these statistics do not only take into account adult asylum seekers and unaccompanied foreign minors but also children accompanying their parent(s).

For management reasons, the CGRS' decisions and caseload refer also to the number of asylum cases.

In this way, Belgian statistics conform to European standards regarding asylum statistics.

Publication date: 12 July 2016
Contact: Tine Van Valckenborgh

tine.vanvalckenborgh@ibz.fgov.be

02 205 50 56

TABLE OF CONTENTS

I.	Overview of asylum applications, asylum decisions and caseload.....	2
II.	Applications for asylum in Belgium	4
1.	Number of applications for asylum (first + subsequent applications)	4
a.	Total number of persons who filed an asylum application in 2016	
b.	Top 10 of countries of origin of persons who filed an asylum application	
c.	Number of persons who filed an asylum application per country of origin	
d.	Male/Female ratio of persons who filed an asylum application	
e.	Age graph (with gender breakdown) of persons who filed an asylum application	
2.	First applications for asylum.....	9
a.	Total number of persons who filed a first asylum application in 2016	
b.	Top 10 of countries of origin of persons who filed a first asylum application	
3.	Subsequent applications for asylum	11
a.	Total number of persons who filed a subsequent asylum application in 2016	
b.	Top 10 of countries of origin of persons who filed a subsequent asylum application	
4.	Applications for asylum filed by unaccompanied foreign minors	13
a.	Number of unaccompanied foreign minors who filed an asylum application in 2015-2016	
b.	Number of unaccompanied foreign minors who filed an asylum application in 2007-2016	
c.	Top 5 of countries of origin of unaccompanied foreign minors who filed an asylum application	
d.	Proportion boys/girls among unaccompanied foreign minors 2008-2016	
III.	Asylum decisions.....	15
1.	Decisions taken by the Immigration Office	
2.	Decisions taken by the CGRS	
a.	Number of persons who received an asylum decision	
b.	Number of decisions (cases)	
c.	Top 10 of countries of origin of persons who received refugee status in 2016	
d.	Top 5 of countries of origin of persons who received subsidiary protection in 2016	
e.	Top 10 of countries of origin as to number of cases in which a decision to recognise refugee status was taken in 2016	
f.	Top 5 of countries of origin as to number of cases in which a decision to grant subsidiary protection was taken in 2016	
IV.	Evolution of the total caseload of the CGRS	19

January 2016: asylum statistics refer to the number of persons instead of asylum cases

Until the end of 2015, the statistics published by the CGRS referred to asylum cases (number of asylum applications or asylum decisions). However, one case can refer to several persons as minors accompanying their parent(s) generally do not file an asylum application of their own.

As from January 2016, the CGRS' statistics refer to the number of persons concerned by an asylum application or asylum decision. As a result, these statistics do not only take into account adult asylum seekers and unaccompanied foreign minors but also children accompanying their parent(s).

For management reasons, the CGRS' decisions and caseload refer also to the number of asylum cases.

In this way, Belgian statistics conform to European standards regarding asylum statistics.

I. OVERVIEW OF ASYLUM APPLICATIONS, ASYLUM DECISIONS AND CASELOAD

(Source: Immigration Office and CGRS)

June 2016

Asylum applications (Immigration Office)	% of total number of asylum applications	
Total number of persons having filed an application for asylum *	1.089	
Number of persons who filed a first asylum application	790	72,5%
Number of persons who filed a subsequent asylum application	299	27,5%
Number of unaccompanied foreign minors who filed an asylum application	103	9,5%
Decisions (CGRA)		
% of total number of decisions		
Number of persons whose application was taken into consideration (subsequent asylum application)	162	
Number of persons having received a decision	2.733	
Number of persons who were granted refugee status (RS)	1.323	48,4%
Number of persons who were granted subsidiary protection status (SP)	327	12,0%
Number of persons whose application was not taken into consideration (subsequent asylum application)	262	9,6%
Number of persons who were refused RS and SP + technical refusals	704	25,8%
Number of persons whose asylum application was not taken into consideration (EU)	1	0,0%
Number of persons whose asylum application was not taken into consideration (safe country of origin)	17	0,6%
Number of persons whose asylum application was not taken into consideration (refugee in another EU Member State)	6	0,2%
Number of persons excluded from refugee status and/or subsidiary protection	4	0,1%
Number of persons who renounced their asylum application or whose protection status was revoked	89	3,3%
Total number of persons having received an asylum decision	2.895	
Caseload (CGRS)		
Number of cases		
Total caseload	17.629	

Refusals to take into consideration a subsequent asylum application are included in the monthly total of final decisions taken by the CGRS. Decisions to take into consideration a subsequent application are intermediary decisions and are **not** included in the monthly total of final decisions. Decisions to withdraw or end a protection status are also not included in the final decisions.

The protection rate corresponds to the number of persons who were granted refugee status or subsidiary protection status by the CGRS compared to the total number of persons who received a final decision.

This mode of calculation conforms to EU standards.

* This category includes asylum applications filed at the border and on Belgian territory, as well as asylum applications from persons who have come to Belgium through a relocation or resettlement programme.

2016

Asylum applications (Immigration Office)	% of total number of asylum applications	
Total number of persons having filed an application for asylum *	9.321	
Number of persons who filed a first asylum application	7.384	79,2%
Number of persons who filed a subsequent asylum application	1.937	20,8%
Number of unaccompanied foreign minors who filed an asylum application	652	7,0%
Decisions (CGRA)		
% of total number of decisions		
Number of persons whose application was taken into consideration (subsequent asylum application)	795	
Number of persons having received a decision	13.735	
Number of persons who were granted refugee status (RS)	6.636	48,3%
Number of persons who were granted subsidiary protection status (SP)	1.887	13,7%
Number of persons whose application was not taken into consideration (subsequent asylum application)		
	1.211	8,8%
Number of persons who were refused RS and SP + technical refusals	3.371	24,5%
Number of persons whose asylum application was not taken into consideration (EU)	40	0,3%
Number of persons whose asylum application was not taken into consideration (safe country of origin)	82	0,6%
Number of persons whose asylum application was not taken into consideration (refugee in another EU Member State)	23	0,2%
Number of persons excluded from refugee status and/or subsidiary protection	22	0,2%
Number of persons who renounced their asylum application or whose protection status was revoked	463	3,4%
Total number of persons having received an asylum decision	14.530	
Caseload (CGRS)		
Number of cases		
Total caseload	17.629	

Refusals to take into consideration a subsequent asylum application are included in the monthly total of final decisions taken by the CGRS. Decisions to take into consideration a subsequent application are intermediary decisions and are **not** included in the monthly total of final decisions.

The protection rate corresponds to the number of persons who were granted refugee status or subsidiary protection status by the CGRS compared to the total number of persons who received a final decision.

This mode of calculation conforms to EU standards.

* This category includes asylum applications filed at the border and on Belgian territory, as well as asylum applications from persons who have come to Belgium through a relocation or resettlement programme.

II. APPLICATIONS FOR ASYLUM IN BELGIUM

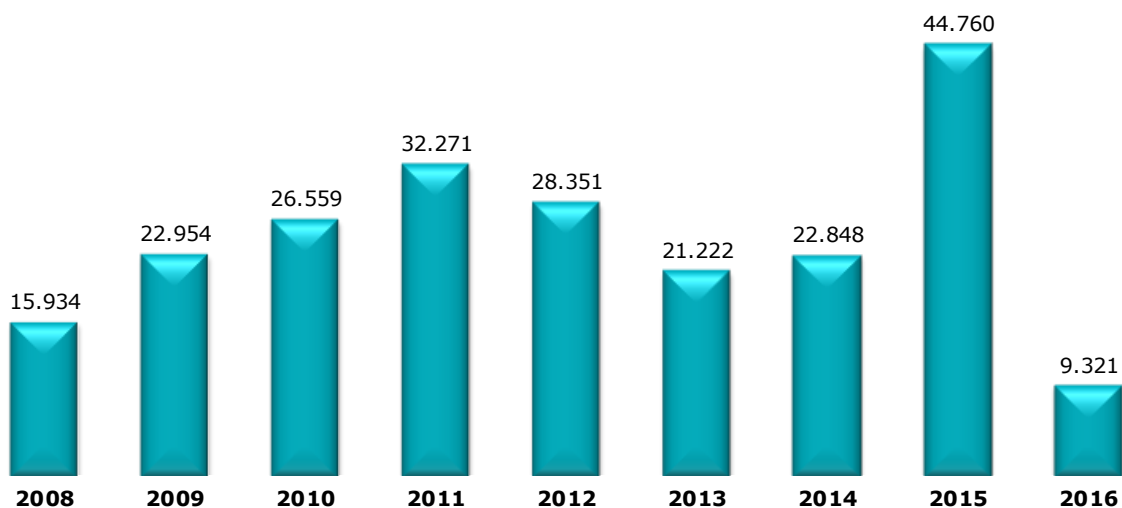
(Source: Immigration Office)

1. Number of applications for asylum (first and subsequent applications)

a. Total number of persons who filed an asylum application in 2016

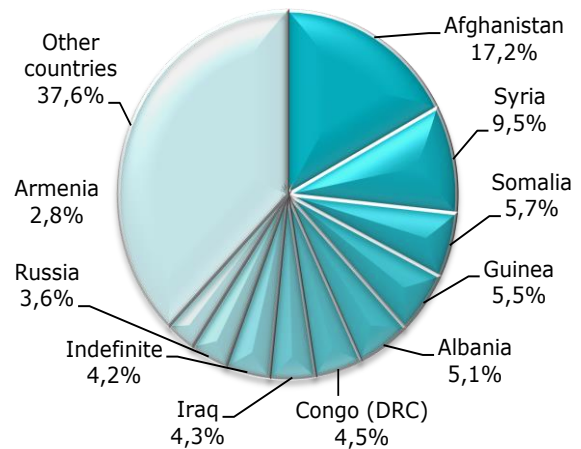
	2015	2016	+/- in % 2016 compared to 2015	+/- in % compared to previous month
January	1.717	2.842	65,5%	-45,7%
February	1.642	1.523	-7,2%	-46,4%
March	1.755	1.374	-21,7%	-9,8%
April	1.627	1.300	-20,1%	-5,4%
May	2.094	1.193	-43,0%	-8,2%
June	2.894	1.089	-62,4%	-8,7%
July	3.601			
August	5.595			
September	6.830			
October	6.043			
November	5.724			
December	5.238			
Total	44.760	9.321		

Total number of persons who filed an asylum application (2008-2016)



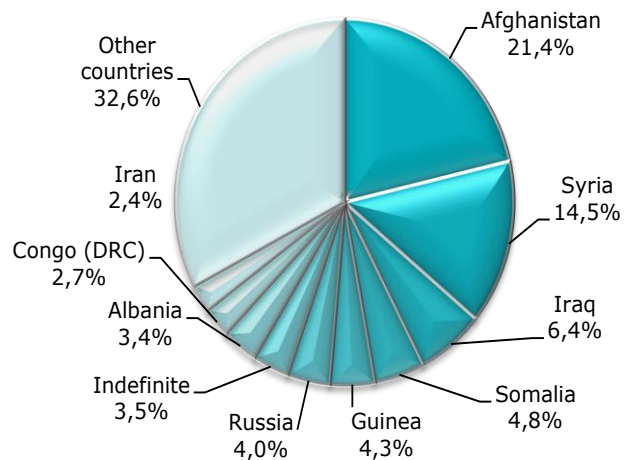
b. Top 10 of countries of origin of persons who filed an asylum application in june 2016

Country of origin	Number of persons
1 Afghanistan	187
2 Syria	103
3 Somalia	62
4 Guinea	60
5 Albania	55
6 Congo (DRC)	49
7 Iraq	47
8 Indefinite	46
9 Russia	39
10 Armenia	31
Other countries	410
Total june 2016	1.089



Top 10 of countries of origin of persons who filed an asylum application in 2016

Country of origin	Number of persons
1 Afghanistan	1994
2 Syria	1356
3 Iraq	593
4 Somalia	448
5 Guinea	400
6 Russia	376
7 Indefinite	323
8 Albania	313
9 Congo (DRC)	250
10 Iran	228
Other countries	3.040
Total 2016	9.321

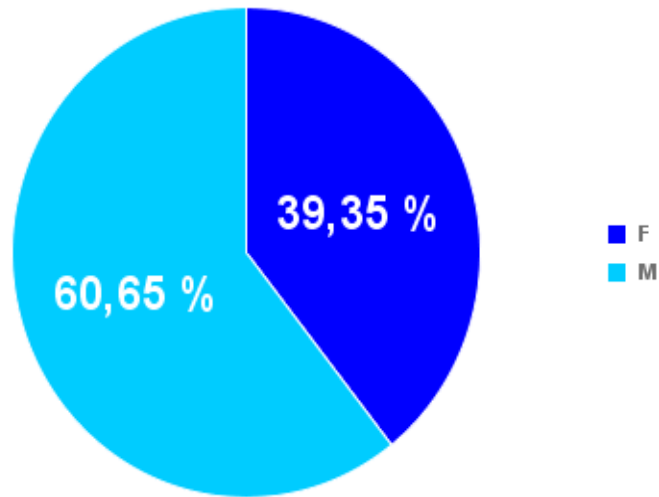


c. Number of persons who filed an asylum application per country of origin

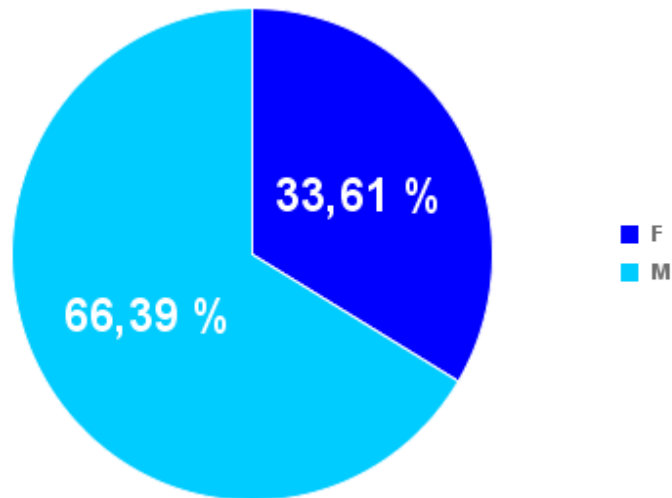
Country of origin	2012	2013	2014	2015	2016	Country of origin	2012	2013	2014	2015	2016
Afghanistan	3288	1674	2331	8308	1194	Libanon	129	96	103	206	72
Albania	1076	775	732	827	313	Liberia	29	28	31	16	3
Algeria	255	160	191	139	40	Libya	20	20	64	83	18
Angola	236	168	108	88	43	Lithuania	10	3	3	3	
Argentina	9	0		1		Luxemburg	1				
Armenia	607	425	281	277	111	Macedonia	835	424	403	335	61
Australia		2				Madagascar	3	4		4	1
Austria					2	Malawi	2		1	1	
Azerbaijan	144	139	90	55	27	Malaysia	2			1	
Bahrein		4				Mali	130	154	81	53	20
Bangladesh	520	214	164	123	38	Malta					
Belorussia	70	67	42	32	14	Mauretania	268	263	165	131	47
Benin	85	62	42	39	13	Mauritius	8	4	1	2	1
Bhutan	6	9	2	4	1	Mexico	1	8	3	5	3
Bosnia-Herzegovina	205	171	150	58	27	Moldova	21	15	20	14	5
Brasil		3	1	5	1	Mongolia	53	33	27	21	
Bulgaria	60	38	16	14	1	Montenegro	103	20	19	15	11
Burkina-Faso	116	123	90	57	24	Morocco	113	147	191	229	113
Burundi	180	209	118	316	143	Mozambique	1				
Cameroon	573	457	416	335	136	Myanmar	22	14	14	11	2
Canada	3	3		1	1	Namibia	1		1	1	
Central African Rep.	8	13	65	25	16	Nepal	227	64	20	79	11
Chad	28	27	23	11	2	Netherlands	9	4	5	2	
Chili	1				5	New Zealand				1	
China	442	457	167	446	139	Nicaragua				1	
Colombia	15	11	2	5	10	Niger	105	95	128	95	39
Comores	2					Nigeria	216	198	154	145	63
Congo RD	1592	1540	826	790	250	North Korea	116	41	3	1	1
Congo RP	27	27	18	12	16	Pakistan	838	399	358	529	65
Costa Rica	1					Palestina	5	5	8	11	6
Croatia	28	25	19	4		Panama				2	
Cuba	6	8	5	4	1	Paraguay	1	1			
Cyprus	1		1	0		Peru		1		1	
Czech Rep.	14	9	3			Philippines		2	1	6	2
Denmark				1		Poland	1	1	5	3	
Djibouti	123	154	157	128	58	Portugal	1				
Dominican Rep.	0	0	3	2	8	Romania	64	75	39	28	3
Ecuador			1	1	1	Russia	2653	2150	1848	1322	377
Egypt	102	143	129	75	36	Rwanda	465	366	324	287	127
El Salvador	21	22	25	37	40	Sao Tomé & Principe			2		
Equatorial Guinea	0	0	1	1	1	Saudi Arabia	0	2		3	
Eritrea	81	72	822	362	135	Senegal	569	379	275	260	74
Ethiopia	62	39	70	78	32	Serbia	1097	685	502	374	99
Fidji				1	1	Sierra Leone	70	49	76	21	19
France	4	1	1	3	4	Singapore				1	
Gabon	4	4	7	12	2	Slovakia	39	17	24	25	8
Gambia	80	79	49	72	23	Slovenia		1			
Georgia	507	371	432	299	143	Somalia	458	271	367	2091	448
Germany				5	6	South Africa	1	5	2	1	
Ghana	94	71	46	25	20	South Korea	1			2	
Greece				5	1	South Sudan		5	5	6	4
Guatemala	13	3	3	1	5	Spain	1			1	1
Guinea	2189	1610	1438	955	400	Sri Lanka	146	126	138	164	41
Guinea-Bissau	28	15	16	9	1	Stateless Persons		10	3	12	2
Guyana	1		1			Sudan	101	76	158	137	30
Haïti	1	3	8	17	2	Surinam	15	5	5	3	3
Honduras	2		4	2		Sweden					1
Hungary	33	12	11	1	1	Switzerland				1	
Indefinite	406	448	1116	1208	320	Syria	1030	1134	2706	10415	1356
India	121	70	84	79	30	Tadzhikistan	9	2	10	20	1
Indonesia				2		Tanzania	82	64	31	13	10
Iran	499	435	480	630	228	Thailand			3		1
Iraq	975	930	1394	9469	593	Togo	257	225	157	177	60
Israel	7	4	1	4	2	Tunisia	66	62	68	81	28
Italy	3	2	3			Turkey	463	318	278	304	146
Ivory Coast	257	168	136	119	64	Turkmenistan		0		1	
Jamaica	1		10	6	1	Uganda	23	21	15	21	5
Japan	1					Ukraine	88	65	569	434	91
Jordania	33	20	33	31	12	United Arab Emirates	2			1	
Kampuchea				1		United Kingdom				1	
Kazakhstan	224	133	69	22	2	Uruguay	1				
Kenia	44	33	25	13	9	USA	4	2	2	4	1
Kirghizistan	80	86	57	62	10	Uzbekistan	14	16	3	11	
Kosovo	1741	1268	842	737	151	Venezuela		2	19	19	17
Kuwait	1			4	1	Vietnam	4	16	3	2	
Laos		1				Western Sahara	18	10	20	47	
Latvia	1		4	1		Yemen			2	0	11
Lesotho			1			Zambia			2		
						Zimbabwe		2	3	5	3

d. Male/Female ratio of persons who filed an asylum application

June 2016

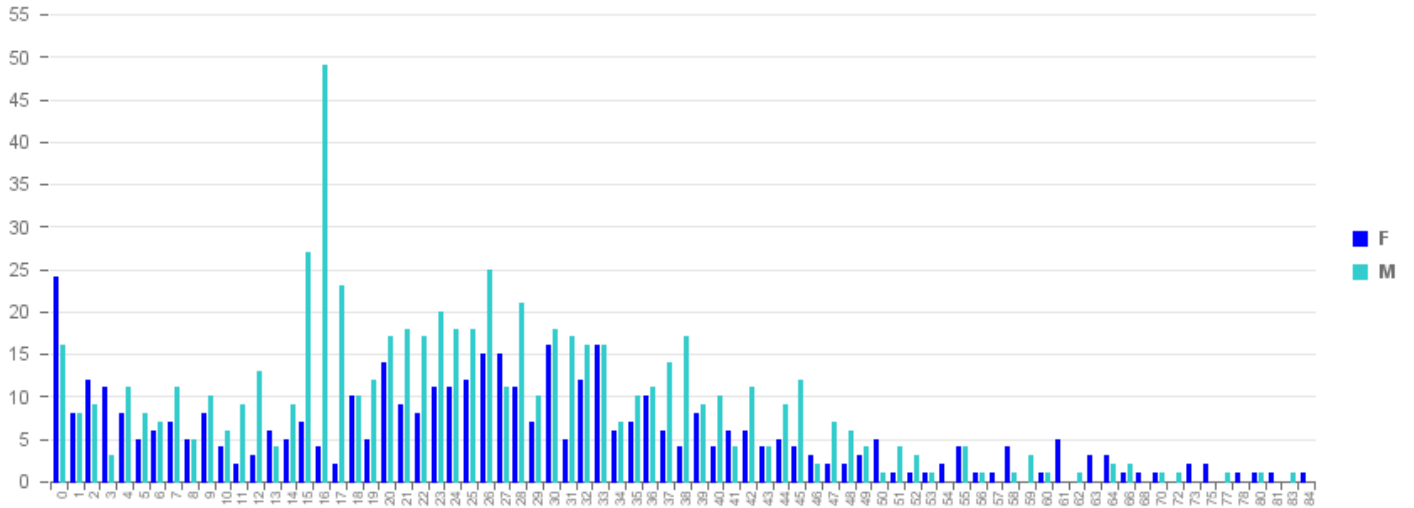


2016

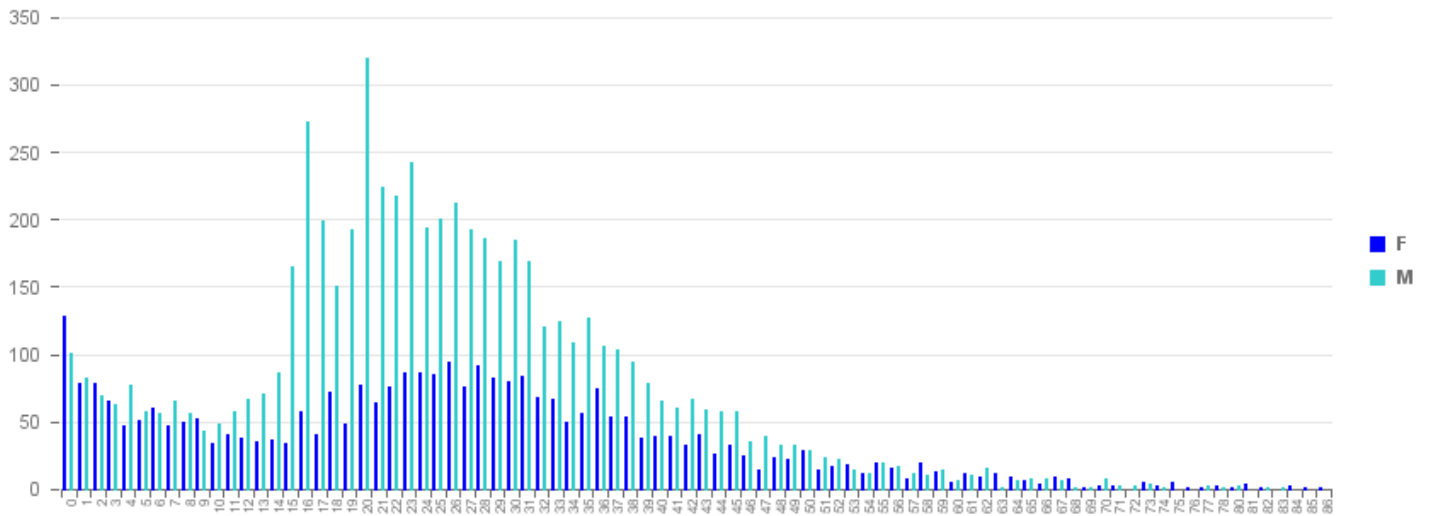


e. Age graph (with gender breakdown) of persons who filed an asylum application

June 2016



2016

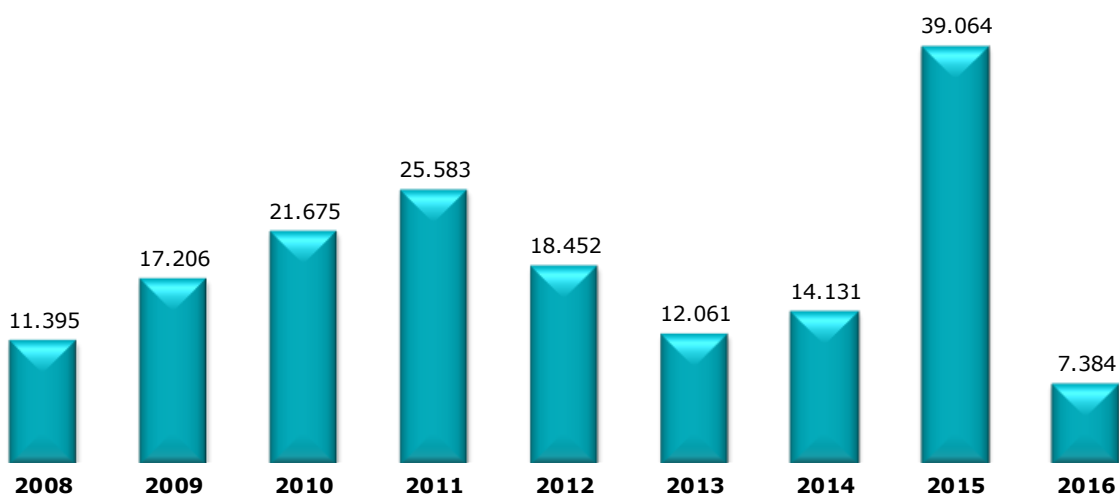


2. First applications for asylum

a. Total number of persons who filed a first asylum application in 2016

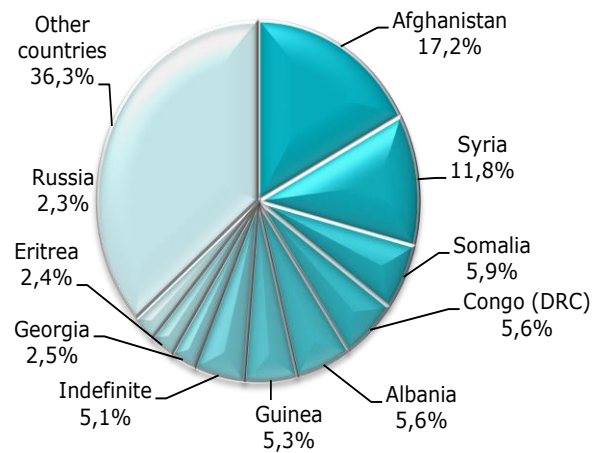
	2015	2016	+/- in % 2016 compared to 2015	+/- in % compared to previous month
January	1.213	2.396	97,5%	-50,4%
February	1.072	1.313	22,5%	-45,2%
March	1.171	1.016	-13,2%	-22,6%
April	1.117	1.033	-7,5%	1,7%
May	1.615	836	-48,2%	-19,1%
June	2.326	790	-66,0%	-5,5%
July	3.137			
August	5.166			
September	6.360			
October	5.532			
November	5.528			
December	4.827			
Total	39.064	7.384		

Total number of persons who filed a first asylum application (2008-2016)



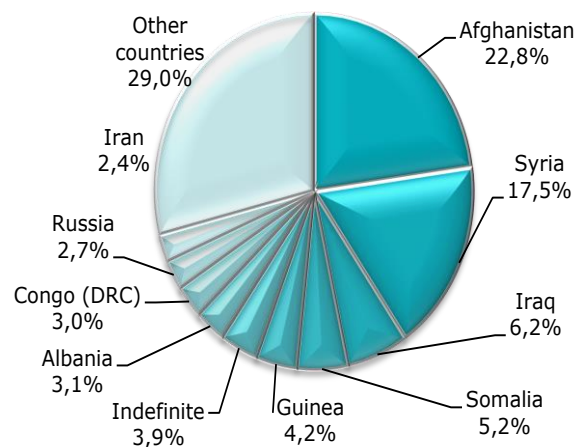
a. Top 10 of countries of origin of persons who filed a first asylum application in june 2016

Land van herkomst	Aantal personen
1 Afghanistan	136
2 Syria	93
3 Somalia	47
4 Congo (DRC)	44
5 Albania	44
6 Guinea	42
7 Indefinite	40
8 Georgia	20
9 Eritrea	19
10 Russia	18
Other countries	287
Total june 2016	790



Top 10 of countries of origin of persons who filed a first asylum application in 2016

Land van herkomst	Aantal personen
1 Afghanistan	1685
2 Syria	1292
3 Iraq	461
4 Somalia	383
5 Guinea	307
6 Indefinite	285
7 Albania	231
8 Congo (DRC)	221
9 Russia	201
10 Iran	180
Other countries	2.138
Totaal 2016	7.384

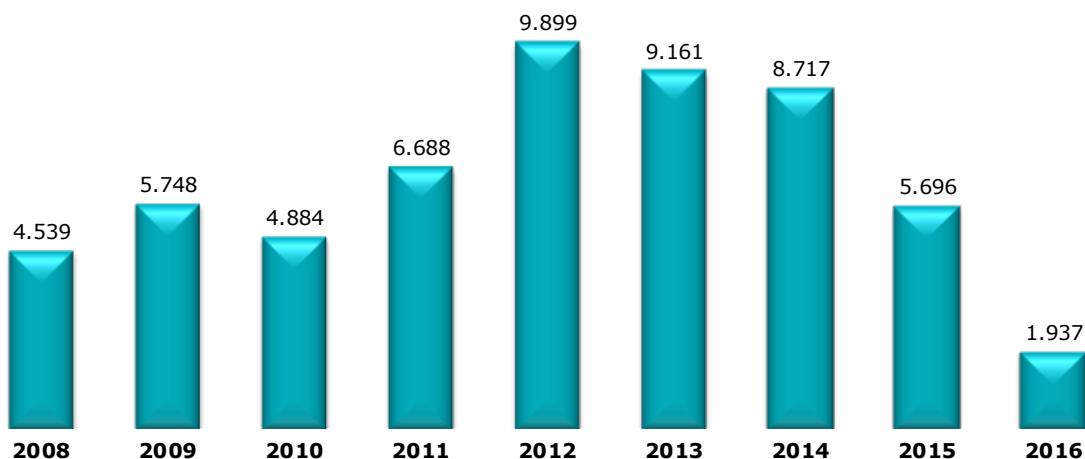


3. Subsequent applications for asylum

a. Total number of persons who filed a subsequent asylum application in 2016

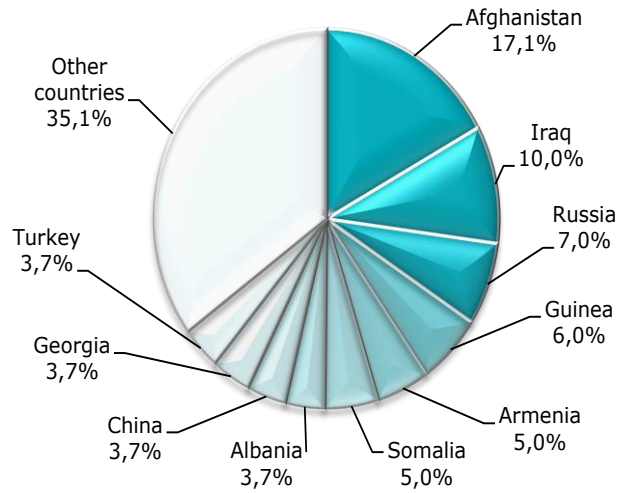
	2015	2016	+/- in % 2016 compared to 2015	+/- in % compared to previous month
January	504	446	-11,5%	8,5%
February	570	210	-63,2%	-52,9%
March	584	358	-38,7%	70,5%
April	510	267	-47,6%	-25,4%
May	479	357	-25,5%	33,7%
June	568	299	-47,4%	-16,2%
July	464			
August	429			
September	470			
October	511			
November	196			
December	411			
Total	5.696	1.937		

Total number of persons who filed a subsequent asylum application (2008-2016)



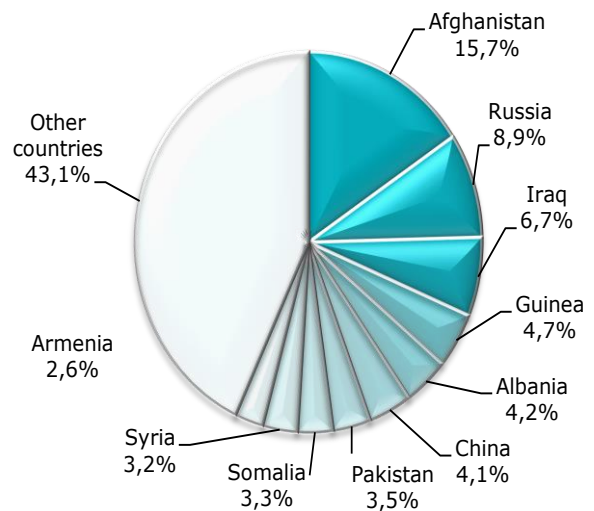
b. Top 10 of countries of origin of persons who filed a subsequent asylum application in June 2016

Country of origin	Number of persons
1 Afghanistan	51
2 Iraq	30
3 Russia	21
4 Guinea	18
5 Armenia	15
6 Somalia	15
7 Albania	11
8 China	11
9 Georgia	11
10 Turkey	11
Other countries	105
Total June 2016	299



Top 10 of countries of origin of persons who filed a subsequent asylum application in 2016

Country of origin	Number of persons
1 Afghanistan	309
2 Russia	176
3 Iraq	132
4 Guinea	93
5 Albania	82
6 China	80
7 Pakistan	70
8 Somalia	65
9 Syria	64
10 Armenia	52
Other countries	850
Total 2016	1.973



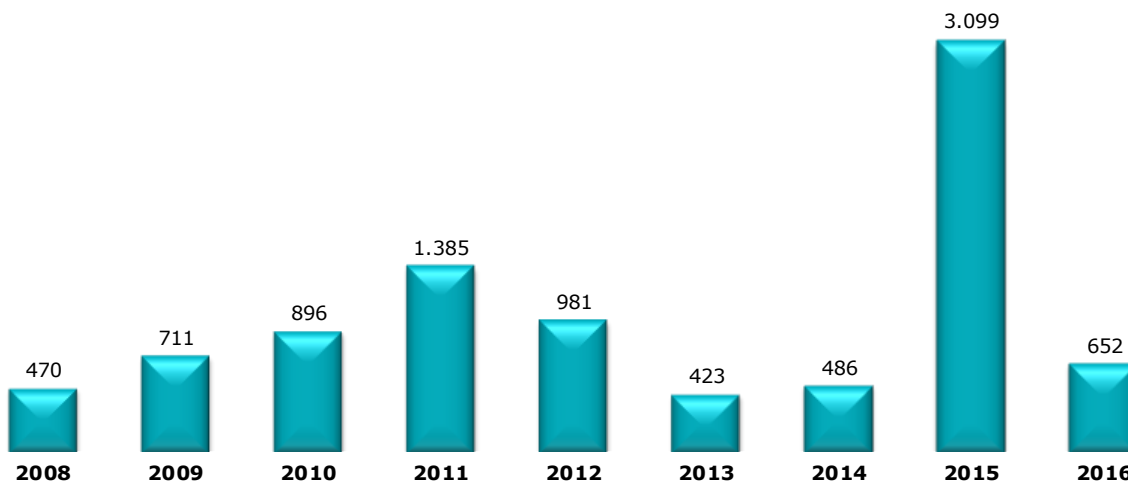
4. Applications for asylum filed by unaccompanied foreign minors

The figures in the table below are regularly updated. The original figures refer to applications filed by young people who declare to be unaccompanied minors at the start of their asylum procedure. The Immigration Office updates these figures according to the result of the bone tests carried out to determine their real age.

a. Number of unaccompanied foreign minors who filed an asylum application in 2015-2016

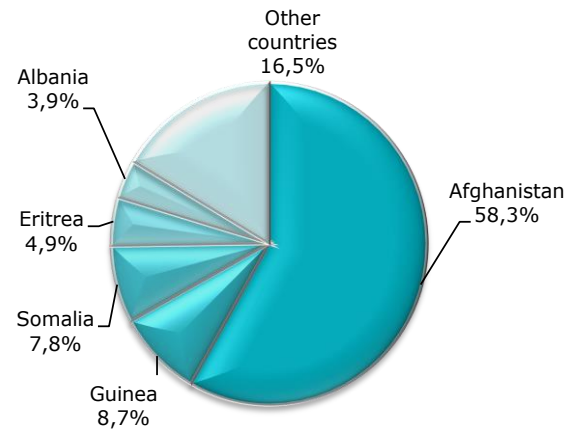
	2015	2016	+/- in % compared to 2015	+/- in % compared to previous month
January	53	185	249,1%	-77,0%
February	43	136	216,3%	-26,5%
March	36	86	138,9%	-36,8%
April	35	67	91,4%	-22,1%
May	79	75	-5,1%	11,9%
June	117	103	-12,0%	37,3%
July	181			
August	214			
September	349			
October	423			
November	765			
December	804			
Total	3.099	652		

b. Number of unaccompanied foreign minors who filed an asylum application in 2008-2016



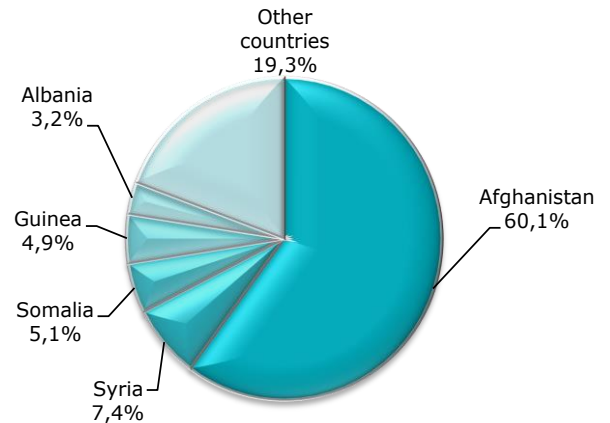
c. Top 5 of countries of origin of unaccompanied foreign minors who filed an asylum application in June 2016

Country of origin	Number of unaccompanied minor aliens
1 Afghanistan	60
2 Guinea	9
3 Somalia	8
4 Eritrea	5
5 Albania	4
Other countries	17
Total June 2016	103



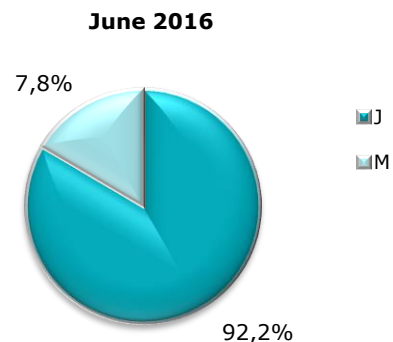
Top 5 of countries of origin of unaccompanied foreign minors who filed an asylum application in 2016

Country of origin	Number of unaccompanied minor aliens
1 Afghanistan	392
2 Syria	48
3 Somalia	33
4 Guinea	32
5 Albania	21
Other countries	126
Total 2016	652



d. Proportion boys/girls among unaccompanied foreign minors 2008-2016

	Boys	Girls
2008	71,4%	28,6%
2009	78,0%	22,0%
2010	72,9%	27,1%
2011	77,9%	22,1%
2012	74,7%	25,3%
2013	67,6%	32,4%
2014	71,4%	28,6%
2015	83,5%	16,5%
2016	89,0%	11,0%



III. ASYLUM DECISIONS

1. Decisions taken by the Immigration Office

(Source: Immigration Office)

June 2016

	Number of persons
Transfer of files to CGRS	1.618
25/26 quater (Dublin)	264
Renunciation, ...	9
Total	1.891

The Immigration Department has a power of decision with regard to the application of the Dublin Regulation (annexes 25/26 quater), renunciations... If the Immigration Department does not make a decision, the case will be transferred to the CGRS for examination.

2. Decisions taken by the CGRS

(Source: CGRS)

a. Number of persons who received an asylum decision

	Jan	Feb	Mar	April	May	June	Total
Number of persons who received refugee status (RS)	924	1.013	1.142	1.106	1.128	1.323	6.636
Number of persons who received subsidiary protection status (SP)	250	342	377	346	245	327	1.887
Number of persons whose asylum application was taken into consideration (multiple application)	99	96	128	187	123	162	795
Number of persons whose asylum application was not taken into consideration (subsequent application)	138	218	216	203	174	262	1.211
Number of persons who were refused RS and SP	408	519	513	523	491	653	3.107
Number of persons whose asylum application was not taken into consideration (EU)	27	6	4	2	0	1	40
Number of persons whose asylum application was not taken into consideration (safe country)	7	21	13	9	15	17	82
Number of persons whose asylum application was not taken into consideration (refugee in other EU Member State)	2	4	7	2	2	6	23
Number of persons for whom a technical decision was taken	17	55	45	41	55	51	264
Number of persons excluded from RS and/or SP	3	4	0	5	6	4	22
Number of persons for whom RS or SP ceased to apply	0	2	1	1	2	0	6
Number of persons whose RS or SP was withdrawn	6	2	6	0	7	5	26
Number of persons who renounced their asylum application	29	83	109	63	63	84	431
Total	1.910	2.365	2.561	2.488	2.311	2.895	14.530

b. Number of decisions (cases)

	Jan	Feb	Mar	Apr	May	Jun	Total
Recognition of refugee status (RS)	769	830	908	904	851	1.041	5.303
Granting of subsidiary protection status (SP)	177	258	257	243	182	246	1.363
							0
Decision to take the application into consideration (subsequent asylum application)	82	80	105	136	95	117	615
Refusal to take the application into consideration (subsequent asylum application)	125	177	178	173	137	219	1.009
							0
Refusal of RS and SP	331	446	439	437	416	560	2.629
Refusal to take the application into consideration (EU)	14	4	1	2	0	1	22
Refusal to take the application into consideration (Safe country)	5	18	11	6	8	16	64
Refusal to take the application into consideration (Refugee in another EU Member State)	2	4	6	2	2	3	19
Technical refusal	15	53	39	32	36	45	220
Exclusion from RS and SP	3	2	0	5	4	4	18
Cessation of RS or SP	0	2	1	1	2	0	6
Withdrawal of RS or SP	6	2	6	0	7	5	26
Renunciation + return with IOM	28	69	102	57	61	79	396
Devoid of purpose (art. 55 regularisation)	0	0	0	0	0	0	0
Total	1.557	1.945	2.053	1.998	1.801	2.336	11.695

c. Top 10 of countries of origin of persons who received refugee status in 2016

Country of origin	Number of beneficiaries of refugee status	Total number of decisions	
1 Syria	3.480	4.773	72,9%
2 Iraq	1.269	2.993	42,4%
3 Somalia	335	671	49,9%
4 Afghanistan	299	1.089	27,5%
5 Indefinite	218	264	82,6%
6 Eritrea	186	226	82,3%
7 Guinea	137	341	40,2%
8 Russia	106	357	29,7%
9 China	65	185	35,1%
10 Congo (DRC)	39	262	14,9%
Other countries	502	2.542	19,7%
Total 2016	6.636	13.703	48,4%

Refusals to take into consideration a subsequent asylum application are included in the monthly total of final decisions taken by the CGRS. Decisions to take into consideration a subsequent application are intermediary decisions and are **not** included in the monthly total of final decisions. Decisions to withdraw or end a protection status are also not included in the final decisions.

The protection rate corresponds to the number of persons who were granted refugee status or subsidiary protection status by the CGRS compared to the total number of persons who received a final decision.

This mode of calculation conforms to EU standards.

d. Top 5 of countries of origin of persons who received subsidiary protection status in 2016

Country of origin	Number of beneficiaries of subsidiary protection	Total number of final decisions	
1 Syria	1.151	4.773	24,1%
2 Iraq	296	2.993	9,9%
3 Afghanistan	268	1.089	24,6%
4 Somalia	122	671	18,2%
5 Libya	19	30	63,3%
Other countries	31	4.147	0,7%
Total 2016	1.887	13.703	13,8%

Refusals to take into consideration a subsequent asylum application are included in the monthly total of final decisions taken by the CGRS. Decisions to take into consideration a subsequent application are intermediary decisions and are **not** included in the monthly total of final decisions. Decisions to withdraw or end a protection status are also not included in the final decisions.

The protection rate corresponds to the number of persons who were granted refugee status or subsidiary protection status by the CGRS compared to the total number of persons who received a final decision.

This mode of calculation conforms to EU standards.

e. Top 10 of countries of origin as to number of cases in which a decision to recognise refugee status was taken in 2016

Country of origin	Number of decisions granting refugee status	Total number of final decisions	
1 Syria	2.762	3.569	77,4%
2 Iraq	982	2.464	39,9%
3 Somalia	319	641	49,8%
4 Afghanistan	239	957	25,0%
5 Indefinite	173	210	82,4%
6 Eritrea	165	198	83,3%
7 Guinea	89	258	34,5%
8 Russia	68	245	27,8%
9 China	57	171	33,3%
10 Congo (DRC)	39	235	16,6%
Other countries	413	2.100	19,7%
Total 2016	5.306	11.048	48,0%

Refusals to take into consideration a subsequent asylum application are included in the monthly total of final decisions taken by the CGRS. Decisions to take into consideration a subsequent application are intermediary decisions and are **not** included in the monthly total of final decisions. Decisions to withdraw or end a protection status are also not included in the final decisions.

The protection rate corresponds to the number of persons who were granted refugee status or subsidiary protection status by the CGRS compared to the total number of persons who received a final decision.

This mode of calculation conforms to EU standards.

f. Top 5 of countries of origin as to number of cases in which a decision to grant subsidiary protection was taken in 2016

Country of origin	Number of decisions granting subsidiary protection	Total number of final decisions	
1 Syria	710	3.569	19,9%
2 Iraq	252	2.464	10,2%
3 Afghanistan	246	957	25,7%
4 Somalia	120	641	18,7%
5 Libya	11	18	61,1%
Other countries	24	3.399	0,7%
Total 2016	1.363	11.048	12,3%

Refusals to take into consideration a subsequent asylum application are included in the monthly total of final decisions taken by the CGRS. Decisions to take into consideration a subsequent application are intermediary decisions and are **not** included in the monthly total of final decisions. Decisions to withdraw or end a protection status are also not included in the final decisions.

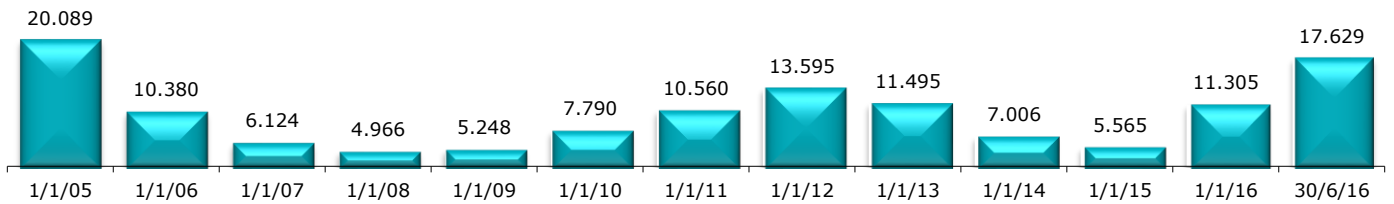
The protection rate corresponds to the number of persons who were granted refugee status or subsidiary protection status by the CGRS compared to the total number of persons who received a final decision.

This mode of calculation conforms to EU standards.

IV. EVOLUTION OF THE TOTAL CASELOAD OF THE CGRA

At the end of June 2016, the total caseload of the CGRS amounted to **17.629** cases (21.927 persons). As **4.500** cases can be considered a normal caseload, the actual backlog amounted to **13.129** cases.

Total caseload per year (number of cases)



Caseload over the last sixteen months (number of cases)

