

## ASYLUM STATISTICS MONTHLY REPORT

### JULY 2016

#### **January 2016: asylum statistics refer to the number of persons instead of asylum cases**

**Until the end of 2015**, the statistics published by the CGRS referred to asylum cases (number of asylum applications or asylum decisions). However, one case can refer to several persons as minors accompanying their parent(s) generally do not file an asylum application of their own.

**As from January 2016**, the CGRS' statistics refer to the number of persons concerned by an asylum application or asylum decision. As a result, these statistics do not only take into account adult asylum seekers and unaccompanied foreign minors but also children accompanying their parent(s).

For management reasons, the CGRS' decisions and caseload refer also to the number of asylum cases.

In this way, Belgian statistics conform to European standards regarding asylum statistics.

Publication date: 18 august 2016

Contact: Tine Van Valckenborgh

[tine.vanvalckenborgh@ibz.fgov.be](mailto:tine.vanvalckenborgh@ibz.fgov.be)

02 205 50 56

## TABLE OF CONTENTS

I.	Overview of asylum applications, asylum decisions and caseload.....	<a href="#">2</a>
II.	Applications for asylum in Belgium .....	<a href="#">4</a>
1.	Number of applications for asylum (first + subsequent applications) .....	<a href="#">4</a>
a.	Total number of persons who filed an asylum application in 2016	
b.	Top 10 of countries of origin of persons who filed an asylum application	
c.	Number of persons who filed an asylum application per country of origin	
d.	Male/Female ratio of persons who filed an asylum application	
e.	Age graph (with gender breakdown) of persons who filed an asylum application	
2.	First applications for asylum.....	<a href="#">9</a>
a.	Total number of persons who filed a first asylum application in 2016	
b.	Top 10 of countries of origin of persons who filed a first asylum application	
3.	Subsequent applications for asylum .....	<a href="#">11</a>
a.	Total number of persons who filed a subsequent asylum application in 2016	
b.	Top 10 of countries of origin of persons who filed a subsequent asylum application	
4.	Applications for asylum filed by unaccompanied foreign minors .....	<a href="#">13</a>
a.	Number of unaccompanied foreign minors who filed an asylum application in 2015-2016	
b.	Number of unaccompanied foreign minors who filed an asylum application in 2007-2016	
c.	Top 5 of countries of origin of unaccompanied foreign minors who filed an asylum application	
d.	Proportion boys/girls among unaccompanied foreign minors 2008-2016	
III.	Asylum decisions.....	<a href="#">15</a>
1.	Decisions taken by the Immigration Office	
2.	Decisions taken by the CGRS	
a.	Number of persons who received an asylum decision	
b.	Number of decisions (cases)	
c.	Top 10 of countries of origin of persons who received refugee status in 2016	
d.	Top 5 of countries of origin of persons who received subsidiary protection in 2016	
e.	Top 10 of countries of origin as to number of cases in which a decision to recognise refugee status was taken in 2016	
f.	Top 5 of countries of origin as to number of cases in which a decision to grant subsidiary protection was taken in 2016	
IV.	Evolution of the total caseload of the CGRS .....	<a href="#">19</a>

### January 2016: asylum statistics refer to the number of persons instead of asylum cases

**Until the end of 2015**, the statistics published by the CGRS referred to asylum cases (number of asylum applications or asylum decisions). However, one case can refer to several persons as minors accompanying their parent(s) generally do not file an asylum application of their own.

**As from January 2016**, the CGRS' statistics refer to the number of persons concerned by an asylum application or asylum decision. As a result, these statistics do not only take into account adult asylum seekers and unaccompanied foreign minors but also children accompanying their parent(s).

For management reasons, the CGRS' decisions and caseload refer also to the number of asylum cases.

In this way, Belgian statistics conform to European standards regarding asylum statistics.

## I. OVERVIEW OF ASYLUM APPLICATIONS, ASYLUM DECISIONS AND CASELOAD

(Source: Immigration Office and CGRS)

**July 2016**

Asylum applications (Immigration Office)		% of total number of asylum applications
Total number of persons having filed an application for asylum *	1.322	
Number of persons who filed a first asylum application	1.084	82,0%
Number of persons who filed a subsequent asylum application	238	18,0%
Number of unaccompanied foreign minors who filed an asylum application	107	8,1%
Decisions (CGRA)		% of total number of decisions
Number of persons whose application was taken into consideration (subsequent asylum application)		
	133	
Number of persons having received a decision	1.966	
<b>Number of persons who were granted refugee status (RS)</b>	<b>935</b>	<b>47,6%</b>
<b>Number of persons who were granted subsidiary protection status (SP)</b>	<b>237</b>	<b>12,1%</b>
Number of persons whose application was not taken into consideration (subsequent asylum application)		
	160	8,1%
Number of persons who were refused RS and SP + technical refusals	531	27,0%
Number of persons whose asylum application was not taken into consideration (EU)	1	0,1%
Number of persons whose asylum application was not taken into consideration (safe country of origin)	17	0,9%
Number of persons whose asylum application was not taken into consideration (refugee in another EU Member State)	1	0,1%
Number of persons excluded from refugee status and/or subsidiary protection	1	0,1%
Number of persons who renounced their asylum application or whose protection status was revoked	83	4,2%
Total number of persons having received an asylum decision	2.099	
Caseload (CGRS)		Number of cases
Total caseload	17.226	

**Refusals** to take into consideration a subsequent asylum application are included in the monthly total of final decisions taken by the CGRS. Decisions to take into consideration a subsequent application are intermediary decisions and are **not** included in the monthly total of final decisions. Decisions to withdraw or end a protection status are also not included in the final decisions.

The protection rate corresponds to the number of persons who were granted refugee status or subsidiary protection status by the CGRS compared to the total number of persons who received a final decision.

This mode of calculation conforms to EU standards.

\* This category includes asylum applications filed at the border and on Belgian territory, as well as asylum applications from persons who have come to Belgium through a relocation or resettlement programme.

## 2016

Asylum applications (Immigration Office)		% of total number of asylum applications
Total number of persons having filed an application for asylum *	10.643	
Number of persons who filed a first asylum application	8.468	79,6%
Number of persons who filed a subsequent asylum application	2.175	20,4%
Number of unaccompanied foreign minors who filed an asylum application	738	6,9%
Decisions (CGRA)		% of total number of decisions
Number of persons whose application was taken into consideration (subsequent asylum application)	931	
Number of persons having received a decision	15.710	
<b>Number of persons who were granted refugee status (RS)</b>	<b>7.578</b>	<b>48,2%</b>
<b>Number of persons who were granted subsidiary protection status (SP)</b>	<b>2.125</b>	<b>13,5%</b>
Number of persons whose application was not taken into consideration (subsequent asylum application)	1.372	8,7%
Number of persons who were refused RS and SP + technical refusals	3.902	24,8%
Number of persons whose asylum application was not taken into consideration (EU)	41	0,3%
Number of persons whose asylum application was not taken into consideration (safe country of origin)	99	0,6%
Number of persons whose asylum application was not taken into consideration (refugee in another EU Member State)	24	0,2%
Number of persons excluded from refugee status and/or subsidiary protection	23	0,1%
Number of persons who renounced their asylum application or whose protection status was revoked	546	3,5%
Total number of persons having received an asylum decision	16.641	
Caseload (CGRS)		Number of cases
Total caseload	17.226	

**Refusals** to take into consideration a subsequent asylum application are included in the monthly total of final decisions taken by the CGRS. Decisions to take into consideration a subsequent application are intermediary decisions and are **not** included in the monthly total of final decisions.

The protection rate corresponds to the number of persons who were granted refugee status or subsidiary protection status by the CGRS compared to the total number of persons who received a final decision.

This mode of calculation conforms to EU standards.

\* This category includes asylum applications filed at the border and on Belgian territory, as well as asylum applications from persons who have come to Belgium through a relocation or resettlement programme.

## II. APPLICATIONS FOR ASYLUM IN BELGIUM

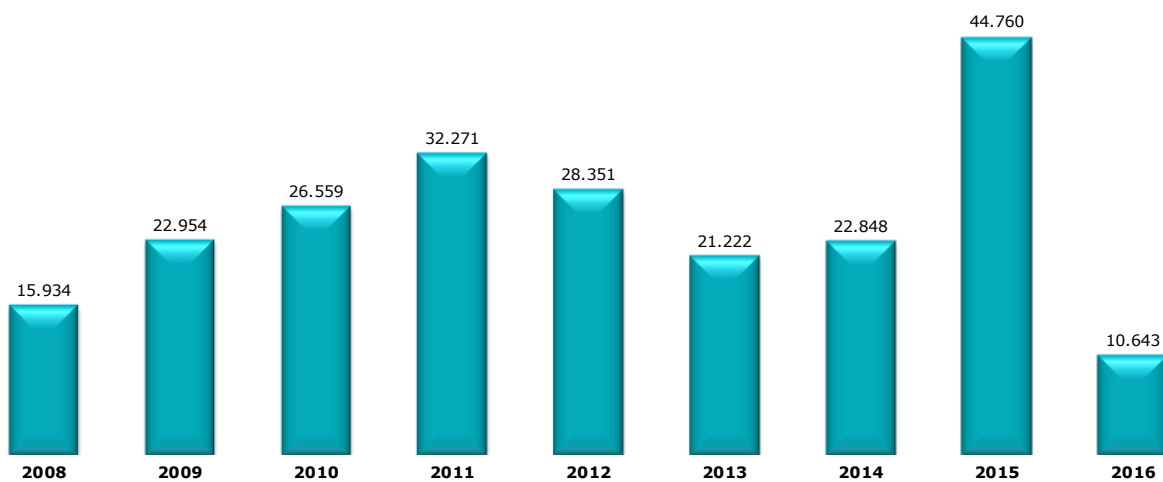
(Source: Immigration Office)

### 1. Number of applications for asylum (first and subsequent applications)

#### a. Total number of persons who filed an asylum application in 2016

	2015	2016	+/- in % 2016 compared to 2015	+/- in % compared to previous month
January	1.717	2.842	65,5%	-45,7%
February	1.642	1.523	-7,2%	-46,4%
March	1.755	1.374	-21,7%	-9,8%
April	1.627	1.300	-20,1%	-5,4%
May	2.094	1.193	-43,0%	-8,2%
June	2.894	1.089	-62,4%	-8,7%
July	3.601	1.322	-63,3%	21,4%
August	5.595			
September	6.830			
October	6.043			
November	5.724			
December	5.238			
<b>Total</b>	<b>44.760</b>	<b>10.643</b>		

#### Total number of persons who filed an asylum application (2008-2016)



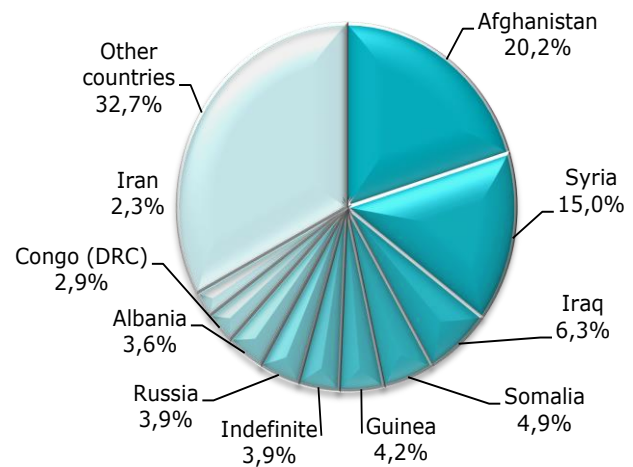
**b. Top 10 of countries of origin of persons who filed an asylum application in july 2016**

Country of origin	Number of persons
1 Syria	245
2 Afghanistan	158
3 Indefinite	90
4 Iraq	79
5 Somalia	74
6 Albania	73
7 Congo (DRC)	55
8 Guinea	51
9 Russia	36
10 Turkey	33
Other countries	428
<b>Total july 2016</b>	<b>1.322</b>



**Top 10 of countries of origin of persons who filed an asylum application in 2016**

Country of origin	Number of persons
1 Afghanistan	2152
2 Syria	1601
3 Iraq	672
4 Somalia	522
5 Guinea	451
6 Indefinite	413
7 Russia	412
8 Albania	386
9 Congo (DRC)	305
10 Iran	244
Other countries	3.485
<b>Total 2016</b>	<b>10.643</b>

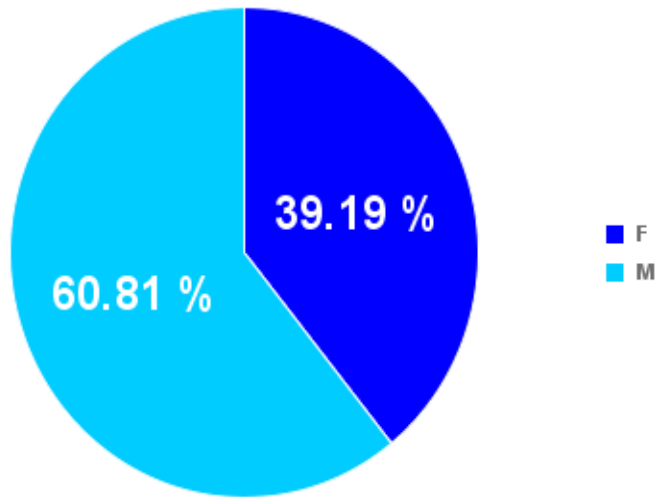


### c. Number of persons who filed an asylum application per country of origin

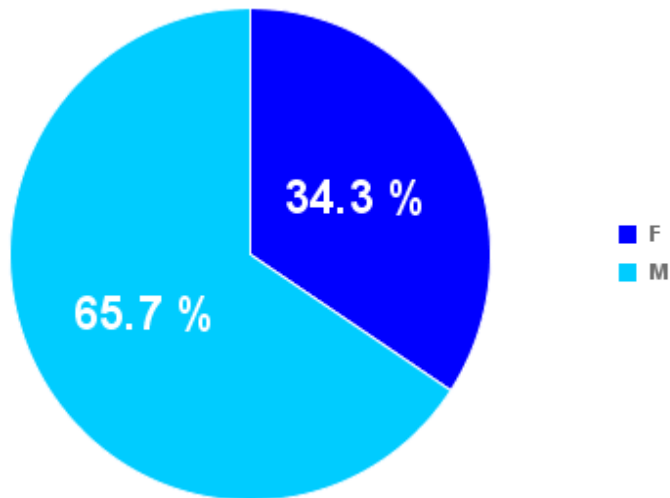
Country of origin	2012	2013	2014	2015	2016	Country of origin	2012	2013	2014	2015	2016
Afghanistan	3288	1674	2331	8308	2152	Libanon	129	96	103	206	94
Albania	1076	775	732	827	386	Liberia	29	28	31	16	4
Algeria	255	160	191	139	43	Libya	20	20	64	83	20
Angola	236	168	108	88	48	Lithuania	10	3	3	3	
Argentina	9	0		1		Luxemburg	1				
Armenia	607	425	281	277	137	Macedonia	835	424	403	335	70
Australia		2				Madagascar	3	4		4	1
Austria					2	Malawi	2		1	1	
Azerbaijan	144	139	90	55	32	Malaysia	2			1	
Bahrein		4				Mali	130	154	81	53	24
Bangladesh	520	214	164	123	41	Malta					
Belorussia	70	67	42	32	16	Mauretania	268	263	165	131	54
Benin	85	62	42	39	17	Mauritius	8	4	1	2	1
Bhutan	6	9	2	4	1	Mexico	1	8	3	5	3
Bosnia-Herzegovina	205	171	150	58	32	Moldova	21	15	20	14	6
Brasil		3	1	5	1	Mongolia	53	33	27	21	
Bulgaria	60	38	16	14	1	Montenegro	103	20	19	15	11
Burkina-Faso	118	123	90	57	25	Morocco	113	147	191	229	122
Burundi	180	209	118	316	165	Mozambique	1				
Cameroon	573	457	416	335	155	Myanmar	22	14	14	11	2
Canada	3	3		1	1	Namibia	1		1	1	
Central African Rep.	8	13	65	25	16	Nepal	227	64	20	79	13
Chad	28	27	23	11	3	Netherlands	9	4	5	2	1
Chili	1				5	New Zealand				1	
China	442	457	167	446	160	Nicaragua				1	
Colombia	15	11	2	5	13	Niger	105	95	128	95	47
Comores	2					Nigeria	216	198	154	145	70
Congo RD	1592	1540	826	790	305	North Korea	116	41	3	1	1
Congo RP	27	27	18	12	18	Pakistan	838	399	358	529	182
Costa Rica	1					Palestina	5	5	8	11	7
Croatia	28	25	19	4		Panama				2	
Cuba	6	8	5	4	1	Paraguay	1	1			
Cyprus	1		1	0		Peru		1		1	
Czech Rep.	14	9	3			Philippines		2	1	6	2
Denmark				1		Poland	1	1	5	3	
Djibouti	123	154	157	128	65	Portugal	1				
Dominican Rep.	0	0	3	2	12	Romania	64	75	39	28	3
Ecuador			1	1	1	Russia	2653	2150	1848	1322	412
Egypt	102	143	129	75	51	Rwanda	465	366	324	287	153
El Salvador	21	22	25	37	48	Sao Tomé & Principe			2		
Equatorial Guinea	0	0	1	1	1	Saudi Arabia	0	2		3	
Eritrea	81	72	822	362	167	Senegal	569	379	275	260	82
Ethiopia	62	39	70	78	38	Serbia	1097	685	502	374	97
Fidji				1	1	Sierra Leone	70	49	76	21	19
France	4	1	1	3	4	Singapore				1	
Gabon	4	4	7	12	3	Slovakia	39	17	24	25	8
Gambia	80	79	49	72	27	Slovenia		1			
Georgia	507	371	432	299	154	Somalia	458	271	367	2091	522
Germany				5	6	South Africa	1	5	2	1	
Ghana	94	71	46	25	22	South Korea	1			2	
Greece				5	1	South Sudan		5	5	6	4
Guatemala	13	3	3	1	5	Spain	1			1	1
Guinea	2189	1610	1438	955	451	Sri Lanka	146	126	138	164	44
Guinea-Bissau	28	15	16	9	1	Stateless Persons		10	3	12	2
Guyana	1		1			Sudan	101	76	158	137	40
Haïti	1	3	8	17	2	Surinam	15	5	5	3	3
Honduras	2		4	2		Sweden				1	
Hungary	33	12	11	1	1	Switzerland				1	
Indefinite	406	448	116	1208	413	Syria	1030	1134	2706	10415	1601
India	121	70	84	79	30	Tadzhikistan	9	2	10	20	1
Indonesia				2		Tanzania	82	64	31	13	14
Iran	499	435	480	630	244	Thailand			3		1
Iraq	975	930	1394	9469	672	Togo	257	225	157	177	69
Israel	7	4	1	4	3	Tunisia	66	62	68	81	31
Italy	3	2	3			Turkey	463	318	278	304	179
Ivory Coast	257	168	136	119	73	Turkmenistan		0		1	
Jamaica	1		10	6	1	Uganda	23	21	15	21	5
Japan	1					Ukraine	88	65	569	434	96
Jordania	33	20	33	31	13	United Arab Emirates	2			1	
Kampuchea				1		United Kingdom				1	
Kazakhstan	224	133	69	22	2	Uruguay	1				
Kenia	44	33	25	13	9	USA	4	2	2	4	1
Kirghizistan	80	86	57	62	12	Uzbekistan	14	16	3	11	
Kosovo	1741	1268	842	737	177	Venezuela		2	19	19	18
Kuwait	1			4	1	Vietnam	4	16	3	2	
Laos		1				Western Sahara	18	10	20	47	
Latvia	1		4	1		Yemen			2	0	12
Lesotho			1			Zambia			2		
						Zimbabwe		2	3	5	3

**d. Male/Female ratio of persons who filed an asylum application**

**July 2016**



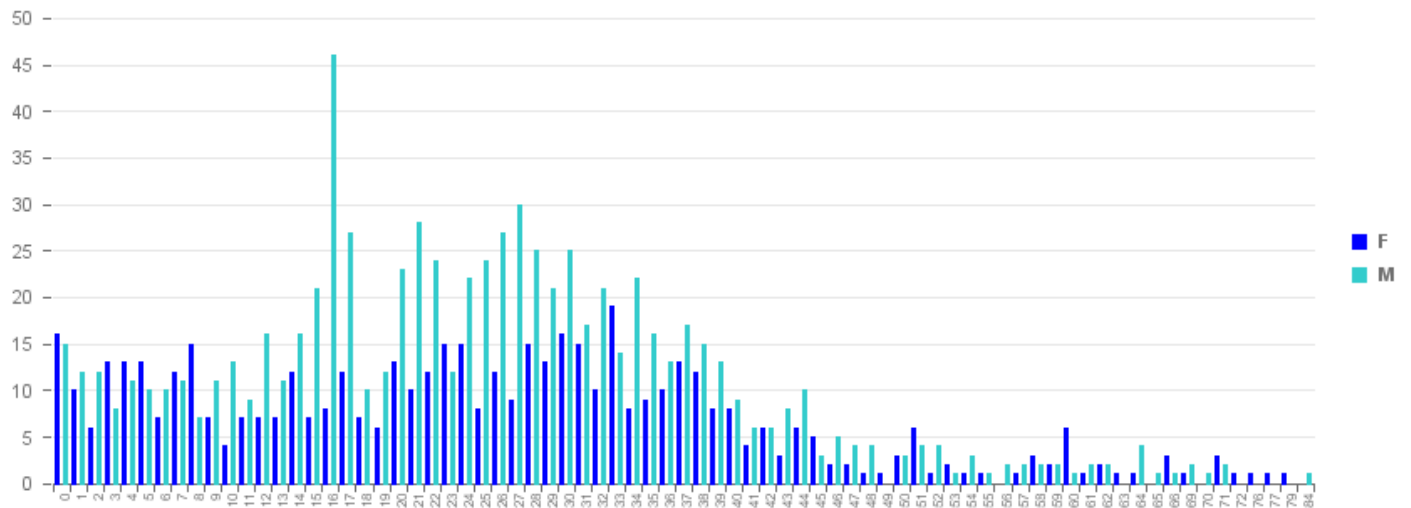
**2016**



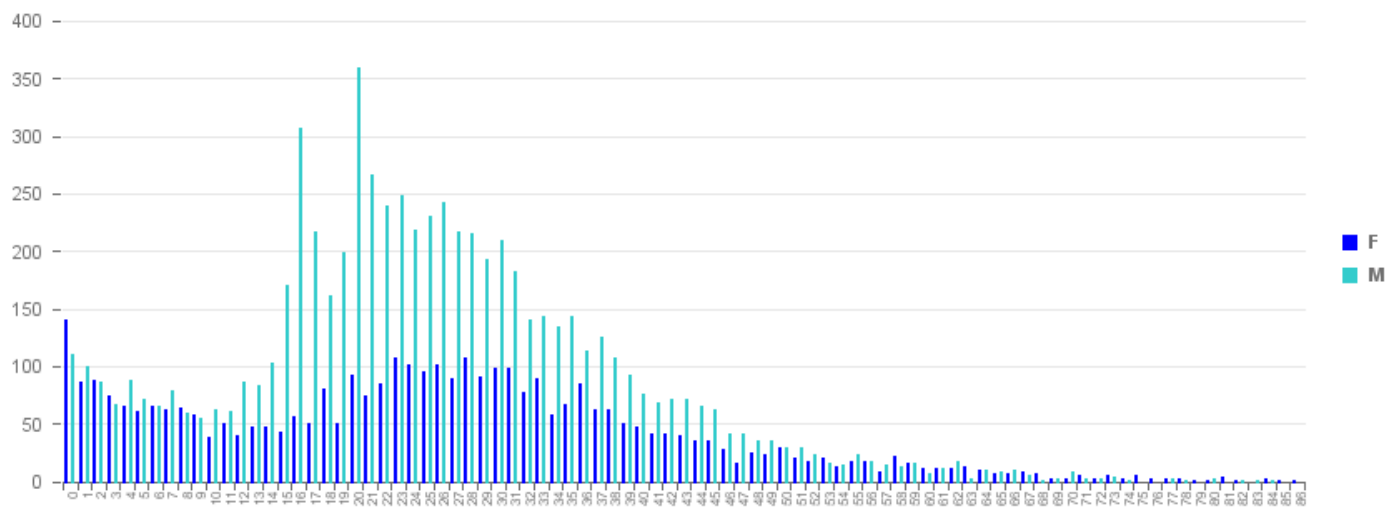


**e. Age graph (with gender breakdown) of persons who filed an asylum application**

**July 2016**



**2016**

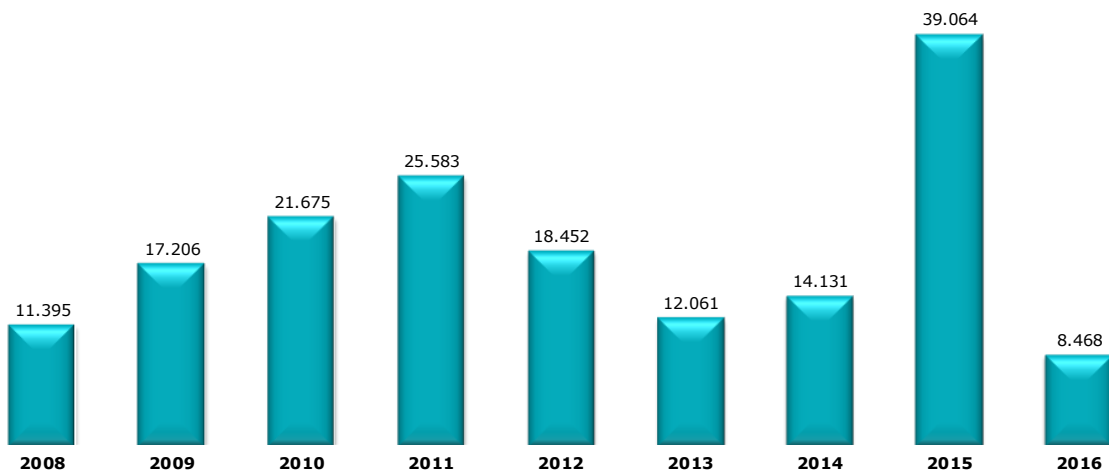


## 2. First applications for asylum

### a. Total number of persons who filed a first asylum application in 2016

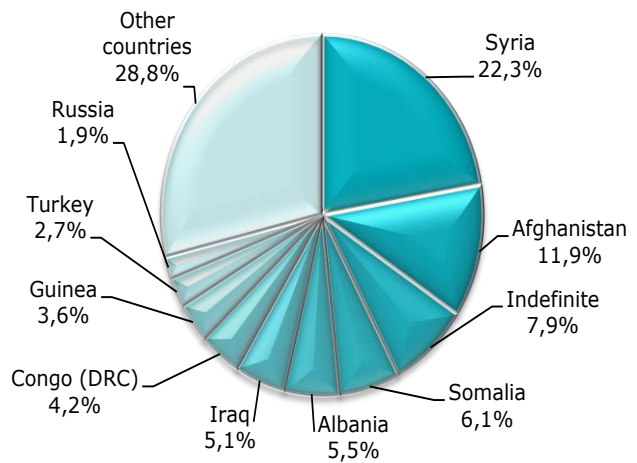
	2015	2016	+/- in % 2016 compared to 2015	+/- in % compared to previous month
January	1.213	2.396	97,5%	-50,4%
February	1.072	1.313	22,5%	-45,2%
March	1.171	1.016	-13,2%	-22,6%
April	1.117	1.033	-7,5%	1,7%
May	1.615	836	-48,2%	-19,1%
June	2.326	790	-66,0%	-5,5%
July	3.137	1.084	-65,4%	37,2%
August	5.166			
September	6.360			
October	5.532			
November	5.528			
December	4.827			
<b>Total</b>	<b>39.064</b>	<b>8.468</b>		

### Total number of persons who filed a first asylum application (2008-2016)



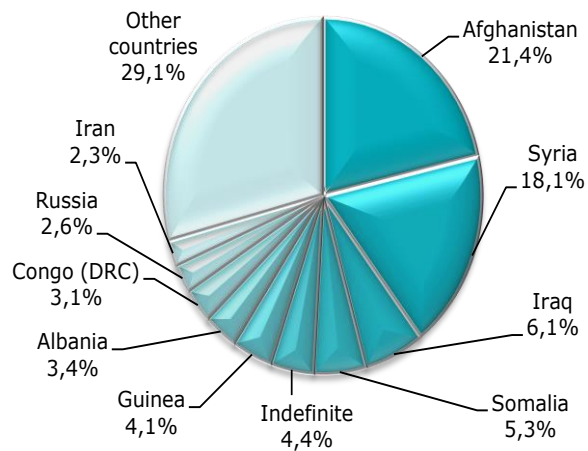
**a. Top 10 of countries of origin of persons who filed a first asylum application in july 2016**

Land van herkomst	Aantal personen
1 Syria	242
2 Afghanistan	129
3 Indefinite	86
4 Somalia	66
5 Albania	60
6 Iraq	55
7 Congo (DRC)	45
8 Guinea	39
9 Turkey	29
10 Russia	21
Other countries	312
<b>Total july 2016</b>	<b>1.084</b>



**Top 10 of countries of origin of persons who filed a first asylum application in 2016**

Land van herkomst	Aantal personen
1 Afghanistan	1814
2 Syria	1534
3 Iraq	516
4 Somalia	449
5 Indefinite	373
6 Guinea	346
7 Albania	291
8 Congo (DRC)	266
9 Russia	220
10 Iran	194
Other countries	2.465
<b>Totaal 2016</b>	<b>8.468</b>

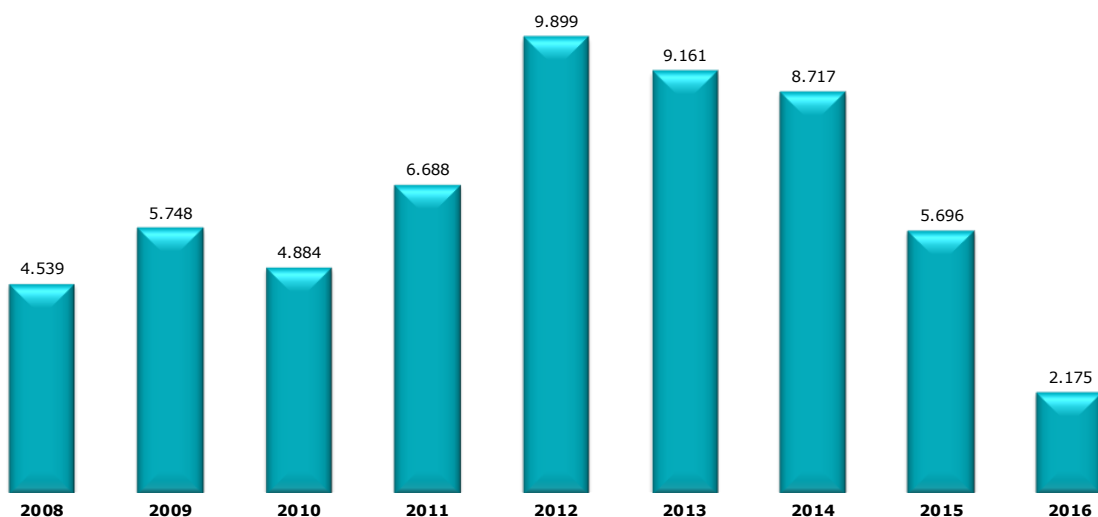


### 3. Subsequent applications for asylum

#### a. Total number of persons who filed a subsequent asylum application in 2016

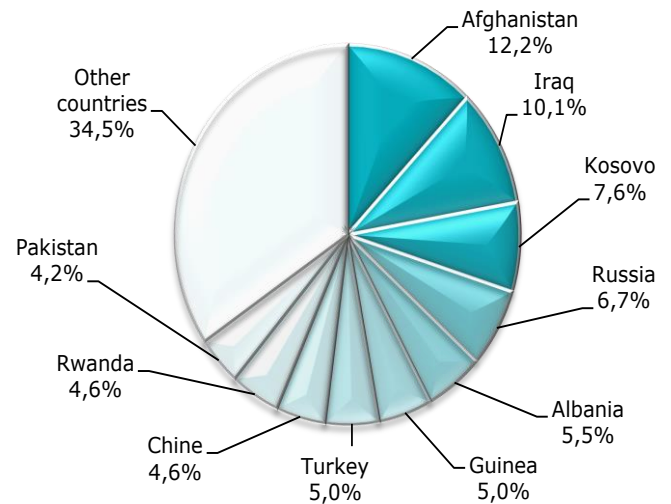
	2015	2016	+/- in % 2016 compared to 2015	+/- in % compared to previous month
January	504	446	-11,5%	8,5%
February	570	210	-63,2%	-52,9%
March	584	358	-38,7%	70,5%
April	510	267	-47,6%	-25,4%
May	479	357	-25,5%	33,7%
June	568	299	-47,4%	-16,2%
July	464	238	-48,7%	-20,4%
August	429			
September	470			
October	511			
November	196			
December	411			
<b>Total</b>	<b>5.696</b>	<b>2.175</b>		

#### Total number of persons who filed a subsequent asylum application (2008-2016)



**b. Top 10 of countries of origin of persons who filed a subsequent asylum application in July 2016**

Country of origin	Number of persons
1 Afghanistan	29
2 Iraq	24
3 Kosovo	18
4 Russia	16
5 Albania	13
6 Guinea	12
7 Turkey	12
8 Chine	11
9 Rwanda	11
10 Pakistan	10
Other countries	82
<b>Total July 2016</b>	<b>238</b>



**Top 10 of countries of origin of persons who filed a subsequent asylum application in 2016**

Country of origin	Number of persons
1 Afghanistan	338
2 Russia	192
3 Iraq	156
4 Guinea	105
5 Albania	95
6 China	91
7 Pakistan	80
8 Somalia	73
9 Syria	67
10 Armenia	61
Other countries	917
<b>Total 2016</b>	<b>2.175</b>



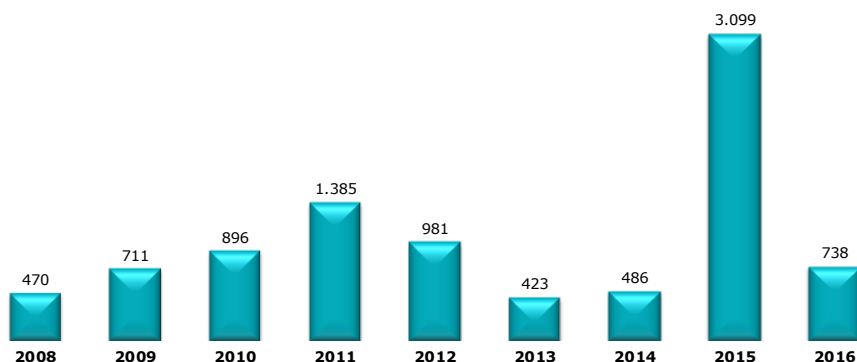
#### 4. Applications for asylum filed by unaccompanied foreign minors

The figures in the table below are regularly updated. The original figures refer to applications filed by young people who declare to be unaccompanied minors at the start of their asylum procedure. The Immigration Office updates these figures according to the result of the bone tests carried out to determine their real age.

##### a. Number of unaccompanied foreign minors who filed an asylum application in 2015-2016

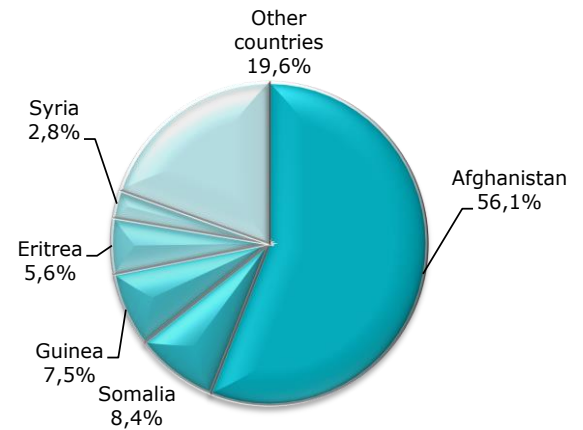
	2015	2016	+/- in % compared to 2015	+/- in % compared to previous month
January	53	185	249,1%	-77,0%
February	43	136	216,3%	-26,5%
March	36	86	138,9%	-36,8%
April	35	65	85,7%	-24,4%
May	79	72	-8,9%	10,8%
June	117	87	-25,6%	20,8%
July	181	107	-40,9%	23,0%
August	214			
September	349			
October	423			
November	765			
December	804			
<b>Total</b>	<b>3.099</b>	<b>738</b>		

##### b. Number of unaccompanied foreign minors who filed an asylum application in 2008-2016



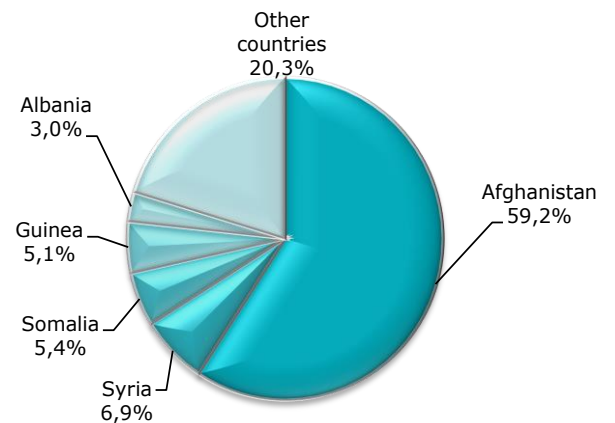
**c. Top 5 of countries of origin of unaccompanied foreign minors who filed an asylum application in July 2016**

Country of origin	Number of unaccompanied minor aliens
1 Afghanistan	60
2 Somalia	9
3 Guinea	8
4 Eritrea	6
5 Syria	3
Other countries	21
<b>Total July 2016</b>	<b>107</b>



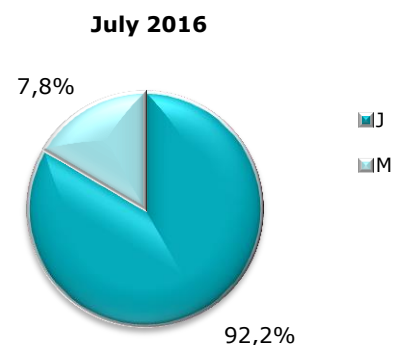
**Top 5 of countries of origin of unaccompanied foreign minors who filed an asylum application in 2016**

Country of origin	Number of unaccompanied minor aliens
1 Afghanistan	437
2 Syria	51
3 Somalia	40
4 Guinea	38
5 Albania	22
Other countries	150
<b>Total 2016</b>	<b>738</b>



**d. Proportion boys/girls among unaccompanied foreign minors 2008-2016**

	Boys	Girls
2008	71,4%	28,6%
2009	78,0%	22,0%
2010	72,9%	27,1%
2011	77,9%	22,1%
2012	74,7%	25,3%
2013	67,6%	32,4%
2014	71,4%	28,6%
2015	83,5%	16,5%
<b>2016</b>	<b>89,0%</b>	<b>11,0%</b>



### III. ASYLUM DECISIONS

#### 1. Decisions taken by the Immigration Office

(Source: Immigration Office)

##### July 2016

	Number of persons
Transfer of files to CGRS	1.341
25/26 quater (Dublin)	185
Renunciation, ...	9
<b>Total</b>	<b>1.535</b>

The Immigration Department has a power of decision with regard to the application of the Dublin Regulation (annexes 25/26 quater), renunciations... If the Immigration Department does not make a decision, the case will be transferred to the CGRS for examination.

#### 2. Decisions taken by the CGRS

(Source: CGRS)

##### a. Number of persons who received an asylum decision

	Jan	Feb	Mar	April	May	June	July	Total
Number of persons who received refugee status (RS)	925	1.014	1.142	1.110	1.128	1.324	935	<b>7.578</b>
Number of persons who received subsidiary protection status (SP)	250	342	377	346	245	328	237	<b>2.125</b>
Number of persons whose asylum application was taken into consideration (multiple application)	99	96	128	187	123	165	133	<b>931</b>
Number of persons whose asylum application was not taken into consideration (subsequent application)	138	218	216	203	174	263	160	<b>1.372</b>
Number of persons who were refused RS and SP	408	519	513	523	491	653	503	<b>3.610</b>
Number of persons whose asylum application was not taken into consideration (EU)	27	6	4	2	0	1	1	<b>41</b>
Number of persons whose asylum application was not taken into consideration (safe country)	7	21	13	9	15	17	17	<b>99</b>
Number of persons whose asylum application was not taken into consideration (refugee in other EU Member State)	2	4	7	2	2	6	1	<b>24</b>
Number of persons for whom a technical decision was taken	17	55	45	41	55	51	28	<b>292</b>
Number of persons excluded from RS and/or SP	3	4	0	5	6	4	1	<b>23</b>
Number of persons for whom RS or SP ceased to apply	0	2	1	1	2	0	1	<b>7</b>
Number of persons whose RS or SP was withdrawn	6	2	6	0	7	5	8	<b>34</b>
Number of persons who renounced their asylum application	29	83	109	63	63	84	74	<b>505</b>
<b>Total</b>	<b>1.911</b>	<b>2.366</b>	<b>2.561</b>	<b>2.492</b>	<b>2.311</b>	<b>2.901</b>	<b>2.099</b>	<b>16.641</b>



**b. Number of decisions (cases)**

	Jan	Feb	Mar	Apr	May	Jun	Jul	Total
<b>Recognition of refugee status (RS)</b>	769	830	908	904	851	1.041	751	<b>6.057</b>
<b>Granting of subsidiary protection status (SP)</b>	177	258	257	243	182	246	179	<b>1.542</b>
								<b>0</b>
Decision to take the application into consideration (subsequent asylum application)	82	80	105	136	95	117	99	<b>714</b>
Refusal to take the application into consideration (subsequent asylum application)	125	177	178	173	137	219	141	<b>1.150</b>
								<b>0</b>
Refusal of RS and SP	331	446	439	437	416	560	440	<b>3.069</b>
Refusal to take the application into consideration (EU)	14	4	1	2	0	1	1	<b>23</b>
Refusal to take the application into consideration (Safe country)	5	18	11	6	8	16	12	<b>76</b>
Refusal to take the application into consideration (Refugee in another EU Member State)	2	4	6	2	2	3	1	<b>20</b>
Technical refusal	15	53	39	32	36	45	24	<b>244</b>
Exclusion from RS and SP	3	2	0	5	4	4	1	<b>19</b>
Cessation of RS or SP	0	2	1	1	2	0	1	<b>7</b>
Withdrawal of RS or SP	6	2	6	0	7	5	8	<b>34</b>
Renunciation + return with IOM	28	69	102	57	61	79	70	<b>466</b>
<b>Total</b>	<b>1.557</b>	<b>1.945</b>	<b>2.053</b>	<b>1.998</b>	<b>1.801</b>	<b>2.336</b>	<b>1.728</b>	<b>13.424</b>

### c. Top 10 of countries of origin of persons who received refugee status in 2016

Country of origin	Number of beneficiaries of refugee status	Total number of decisions	
1 Syria	3.884	5.285	73,5%
2 Iraq	1.515	3.513	43,1%
3 Somalia	415	823	50,4%
4 Afghanistan	358	1.299	27,6%
5 Indefinite	258	311	83,0%
6 Eritrea	199	241	82,6%
7 Guinea	166	406	40,9%
8 Russia	113	386	29,3%
9 China	69	203	34,0%
10 Congo (DRC)	45	309	14,6%
Other countries	556	2.893	19,2%
<b>Total 2016</b>	<b>7.578</b>	<b>15.669</b>	<b>48,4%</b>

**Refusals** to take into consideration a subsequent asylum application are included in the monthly total of final decisions taken by the CGRS. Decisions to take into consideration a subsequent application are intermediary decisions and are **not** included in the monthly total of final decisions. Decisions to withdraw or end a protection status are also not included in the final decisions.

The protection rate corresponds to the number of persons who were granted refugee status or subsidiary protection status by the CGRS compared to the total number of persons who received a final decision.

This mode of calculation conforms to EU standards.

### d. Top 5 of countries of origin of persons who received subsidiary protection status in 2016

Country of origin	Number of beneficiaries of subsidiary protection	Total number of final decisions	
1 Syria	1.244	5.285	23,5%
2 Iraq	346	3.513	9,8%
3 Afghanistan	340	1.299	26,2%
4 Somalia	144	823	17,5%
5 Libya	19	31	61,3%
Other countries	32	4.718	0,7%
<b>Total 2016</b>	<b>2.125</b>	<b>15.669</b>	<b>13,6%</b>

**Refusals** to take into consideration a subsequent asylum application are included in the monthly total of final decisions taken by the CGRS. Decisions to take into consideration a subsequent application are intermediary decisions and are **not** included in the monthly total of final decisions. Decisions to withdraw or end a protection status are also not included in the final decisions.

The protection rate corresponds to the number of persons who were granted refugee status or subsidiary protection status by the CGRS compared to the total number of persons who received a final decision.

This mode of calculation conforms to EU standards.

**e. Top 10 of countries of origin as to number of cases in which a decision to recognise refugee status was taken in 2016**

Country of origin	Number of decisions granting refugee status	Total number of final decisions	
1 Syria	3.071	3.949	77,8%
2 Iraq	1.185	2.893	41,0%
3 Somalia	393	781	50,3%
4 Afghanistan	280	1.137	24,6%
5 Indefinite	206	250	82,4%
6 Eritrea	176	211	83,4%
7 Guinea	107	308	34,7%
8 Russia	71	266	26,7%
9 China	61	189	32,3%
10 Congo (DRC)	45	276	16,3%
Other countries	462	2.409	19,2%
<b>Total 2016</b>	<b>6.057</b>	<b>12.669</b>	<b>47,8%</b>

**Refusals** to take into consideration a subsequent asylum application are included in the monthly total of final decisions taken by the CGRS. Decisions to take into consideration a subsequent application are intermediary decisions and are **not** included in the monthly total of final decisions. Decisions to withdraw or end a protection status are also not included in the final decisions.

The protection rate corresponds to the number of persons who were granted refugee status or subsidiary protection status by the CGRS compared to the total number of persons who received a final decision.

This mode of calculation conforms to EU standards.

**f. Top 5 of countries of origin as to number of cases in which a decision to grant subsidiary protection was taken in 2016**

Country of origin	Number of decisions granting subsidiary protection	Total number of final decisions	
1 Syria	770	3.949	19,5%
2 Afghanistan	309	1.137	27,2%
3 Iraq	285	2.893	9,9%
4 Somalia	142	781	18,2%
5 Libya	11	19	57,9%
Other countries	25	3.890	0,6%
<b>Total 2016</b>	<b>1.542</b>	<b>12.669</b>	<b>12,2%</b>

**Refusals** to take into consideration a subsequent asylum application are included in the monthly total of final decisions taken by the CGRS. Decisions to take into consideration a subsequent application are intermediary decisions and are **not** included in the monthly total of final decisions. Decisions to withdraw or end a protection status are also not included in the final decisions.

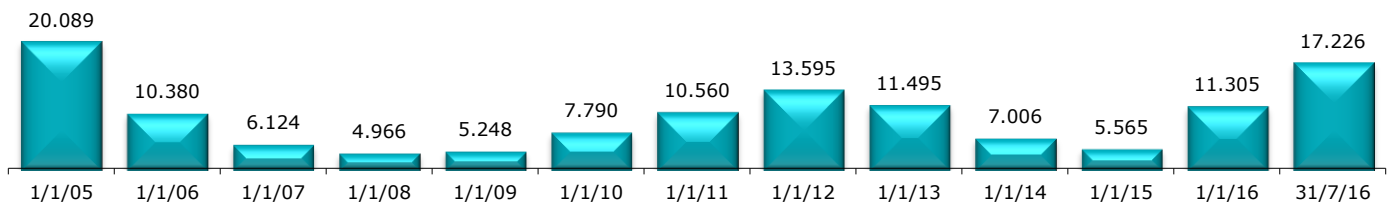
The protection rate corresponds to the number of persons who were granted refugee status or subsidiary protection status by the CGRS compared to the total number of persons who received a final decision.

This mode of calculation conforms to EU standards.

#### IV. EVOLUTION OF THE TOTAL CASELOAD OF THE CGRA

At the end of July 2016, the total caseload of the CGRS amounted to **17.226** cases (21.504 persons). As **4.500** cases can be considered a normal caseload, the actual backlog amounted to **12.726** cases.

##### Total caseload per year (number of cases)



##### Caseload over the last sixteen months (number of cases)

